

The Privilege and Call for Each of Us

A budget picture is incomplete without understanding what's needed to achieve together what was just outlined. To fully engage in 2015 what we believe God is leading us into together, we are both privileged and called to:

- **Faithfully pray** for God's presence in all, guidance through all, and provision for all areas of HOPE
- **Routinely and generously give back to God** and His work, realizing we are His stewards (not owners!), invited to join the work He is powerfully doing
- **Serve in united spirit and effort** to advance the impact and influence God has designed for us

Achieving our 2015 budget together will require:

- 2015 Budget TOTAL: **\$329,805**
(*\$27,484 avg. per month*)
- Less projected building use income (\$18,000) = **\$311,805**
- \$311,805 / 52 weeks = **\$5997 per week in HOPE giving**
(*\$6343/wk. if no building use income*)

Our giving is a reflection of our hearts

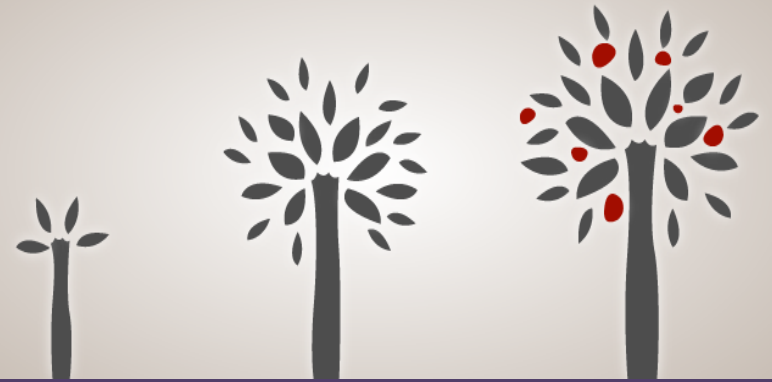
HOPE exists to reach and lead people in a growing relationship with Jesus. In diverse ways, year after year, we see the transforming ways God is building and growing us. When we see our God, who gives so extravagantly and provides so perfectly, what else could our response be than to act in faith, joy, and diligence together? May we all know God's grace and, as **generous givers**, fully reflect who He is. We believe we are managers, not owners, of God's gifts & resources. All that we have is His and comes from Him. He includes us in accomplishing His priorities with the means He places in our hands. Quite simply, we have been entrusted by God.

To whom much is given, much is expected!
~ Luke 12:42-48 • Matthew 25:14-30 ~

HOPE

COMMUNITY CHURCH

www.hope-ccm.org



2015 BUDGET PROPOSAL & STEWARDSHIP CALL

Dear HOPE members, attenders, and supporters,

God has been so faithful to His Church, and we have seen it at HOPE! When we consider all He has already done with HOPE, we're eager to run further toward God's work in 2015 as we submit and respond to His perfect leadership.

This is a practical guide prepared for you to read, pray about, and then affirm for budget year 2015. At our **Jan. 18** worship service, we'll call for a church-wide affirmation of our budget. Leading up to that date, HOPE leaders are glad to discuss any questions or comments you may have about this proposed budget. We invite you to support the vision and aims shared here as well as the giving opportunity before us all to achieve together.

With you to reach and lead people for Jesus,

HOPE Leadership

Children

HOPE children's ministry is a thriving, growing area of God's work here and one of our strongest assets. 2015 budget for this area will cover such things as dynamic children's curriculum, set design and equipment, nursery supplies, children's room furnishings, computerized check-in & database, and leader development.

\$7,260

Youth

HOPE reaches middle school and high school teenagers in relevant ways to shape these young lives. 2015 budget for this area will cover such things as teaching resources, equipment, weekly program supplies/food/drink, transportation costs, leader development, and some youth trip expenses & assistance.

\$3,350

Adult

HOPE adult ministry targets the deepening of outreach, community with one another, spiritual formation, and the health of marriage & family. 2015 budget for this area will cover such things as small group resources, outreach efforts, weekly & special event hospitality, pastoral care, and events/resources to strengthen marriages & families.

\$11,950

Worship

Our main corporate gatherings for worship serve both regular attenders of HOPE and those dipping their toe in church waters perhaps for the first time. 2015 budget for this area will cover such things as music, multimedia, stage sets, licenses, guest speaker honorarium, A/V and musical equipment, software, lighting, and worship team development.

\$7,850

Missions & Benevolence

HOPE's reach is growing in our immediate community . . . and around the world. 2015 budget for this area will cover such things as support for HOPE people serving on short-term mission trips, community impact, regional and global mission partnerships, and benevolent help for those in need.

\$10,100

Operations

Regular operational costs are critical to HOPE life functioning on a daily basis. 2015 budget for this area will cover such things as office equipment, software, office supplies, postage, association and professional fees, financial services, professional services, phone and internet, website and online services, and repayments to our line-of-credit.

\$30,305

Buildings & Grounds

We thank God for our ministry facility, property, and adjacent house (parsonage) . . . all owned outright with no mortgage. Good stewardship of these assets both honors God and serves us well, including our ability to use the parsonage as compensation for one part-time staff member. 2015 budget for this area will cover such things as improvements and repair for main building and parsonage, all utilities, building insurance, janitorial, snow removal, some furnishings and décor, landscaping, and other appropriate facility upgrades.

\$57,700

Personnel

HOPE is first about Jesus and second about people (sounds a bit like a great commandment). God has filled HOPE with incredible people, some of whom are supported in vocation here. 2015 budget for this area will cover such things as pastoral & support staff wages, FICA, health benefits, worker's comp., continuing education & conferences, pastoral expenses & resources, leadership development, and consultation.

\$201,290

2015 Budget TOTAL: \$329,805

(over for more info)